

Rochdale Creates **Space**

# Richard Street Studios

ROCHDALE'S NEW WORKSPACE FOR CREATIVES, RUN BY CREATIVES.



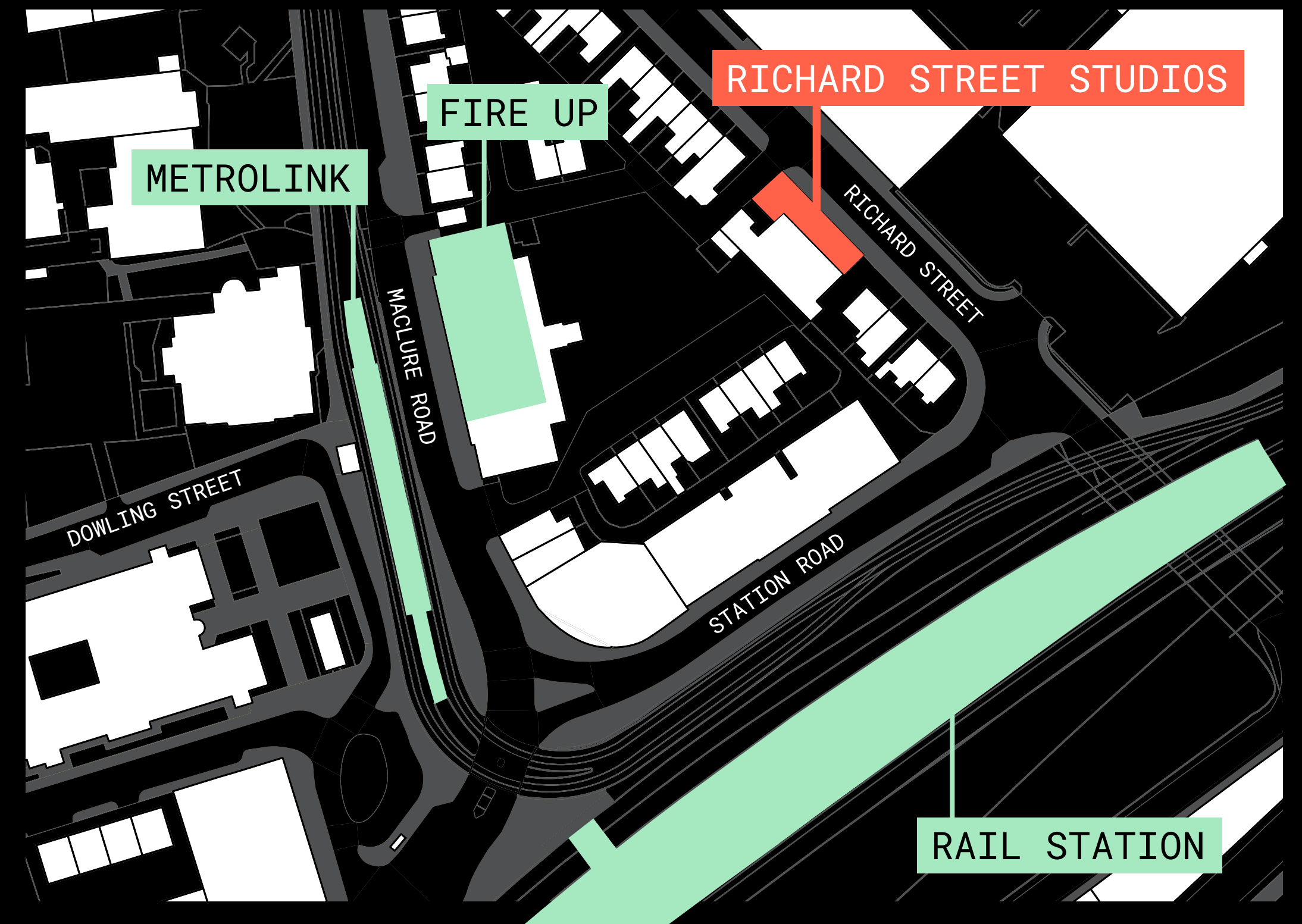
For the doers, the makers, the future facing innovators. A space to grow, a space to meet, a space to stand on your own two feet.  
A creative community.

Space for  
creatives.



### RICHARD STREET STUDIOS IS YOUR NEW CREATIVE SPACE

At the heart of Rochdale's developing creative cluster, with rail station, Metrolink and bus station on your doorstep - our studios are the perfect place to connect across our borough, and our regions thriving creative ecosystem.





# Space for creatives, run by creatives.

## Rochdale Creates Space is excited to announce local production company 'Breaking Barriers' as lead tenant / operator for Richard Street Studios.



This is an exciting time for art and culture in Rochdale. As a Rochdale-based production company, Breaking Barriers are so proud to be the creative operators of Richard Street Studios; a space for artists to create, imagine and make in our hometown. Richard Street Studios is an investment in the developing creative economy of our town, as well as future generations of creative innovators.

Parvez Qadir - Artistic Director, Breaking Barriers



GET IN TOUCH: [studio@breakingbarriers.com](mailto:studio@breakingbarriers.com)

Space for  
creatives.



Space for  
creatives.



OUR SPACE IS DESIGNED TO PUT  
YOUR CREATIVITY CENTRE STAGE



Together we're more than a sum of our parts.  
Its in our DNA.  
Put simply, it's the Rochdale way.

Space to  
collaborate.



#### THE KITCHEN HUB IS THE SOCIAL HEART OF OUR BUILDING

The perfect place to pause for a brew, collaborate with colleagues or come together around our large digital presentation screen for informal meetings and workshops.



#### STUDIO 1 IS OUR MOST FLEXIBLE SPACE

Available for short or long term bookings, the flexible fit out includes track lighting, projector, stackable / folding furniture, and wraparound acoustic curtains. Ideal for rehearsals, performances, workshops or exhibitions.



Space to collaborate.

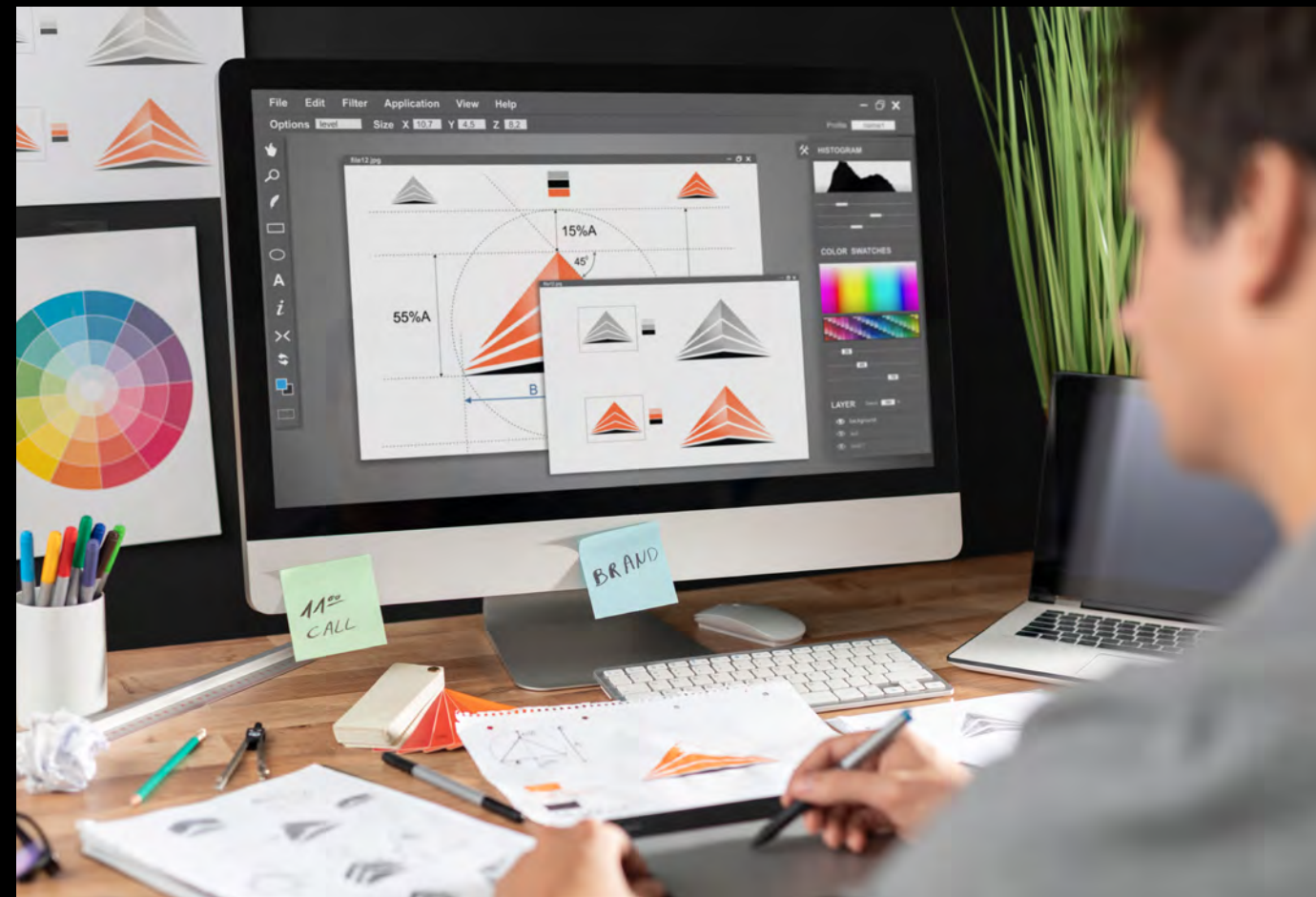


OUR CORRIDORS ARE DESIGNED AS EXHIBITION SPACES





# Is it time for that next step? We want to support you to do what you do best.



Space to  
grow.

## YOU DECIDE WHAT'S RIGHT FOR YOU

Initial packages allow you to decide between workstation and fit out options:

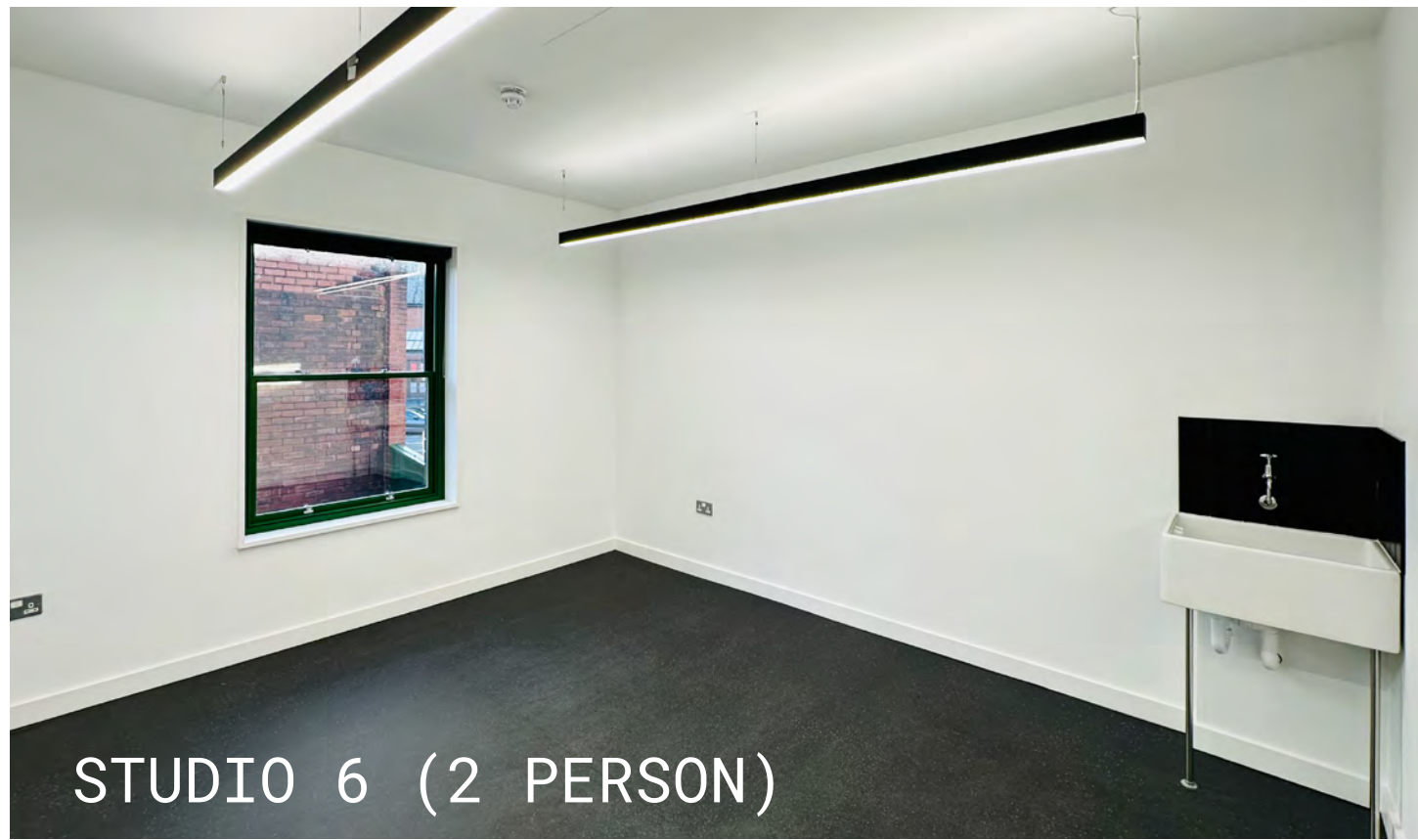
- Clean workstations with ergonomic chair and optional widescreen monitor.
- Messy workstations with sinks in studios.

## AN ARTIST DEVELOPMENT HUB

- On-site artist development programmes and networking events.
- Regular funding advice surgeries.
- The Growth Company host free training and networking at neighbouring Fire Up.



Space to  
grow.



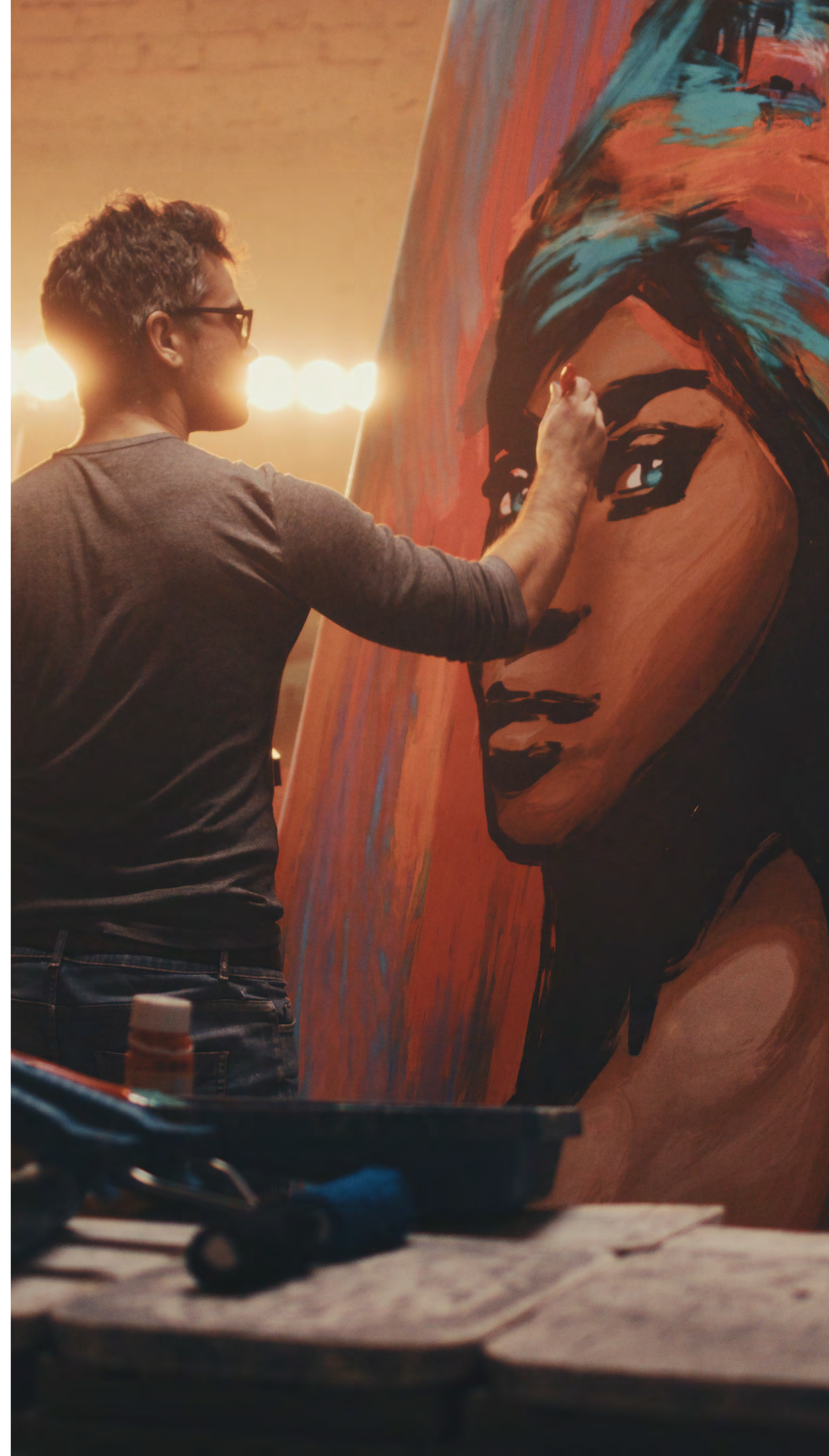
STUDIO 6 (2 PERSON)



STUDIO 2 (3 PERSON)

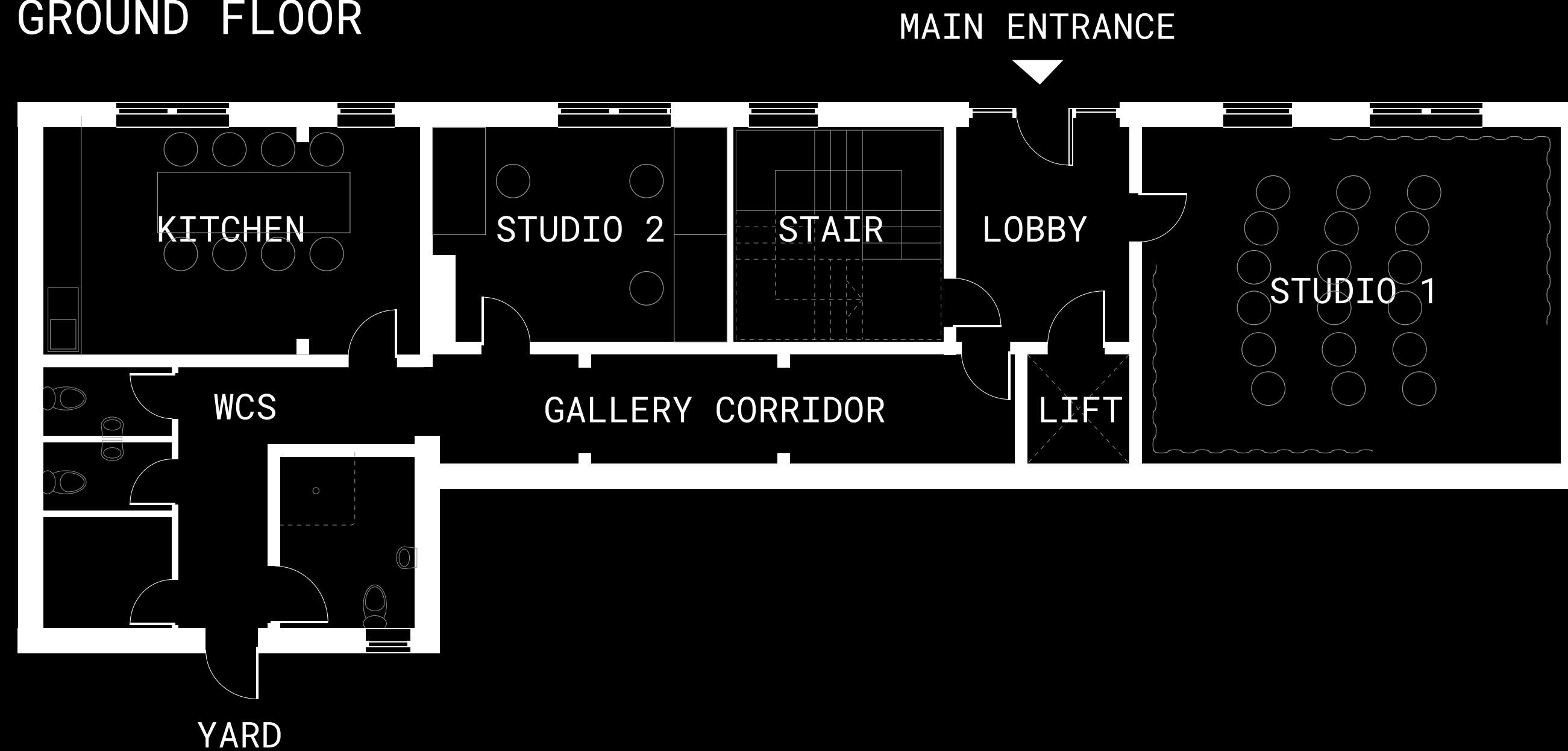


STUDIO 5 (3/4 PERSON)

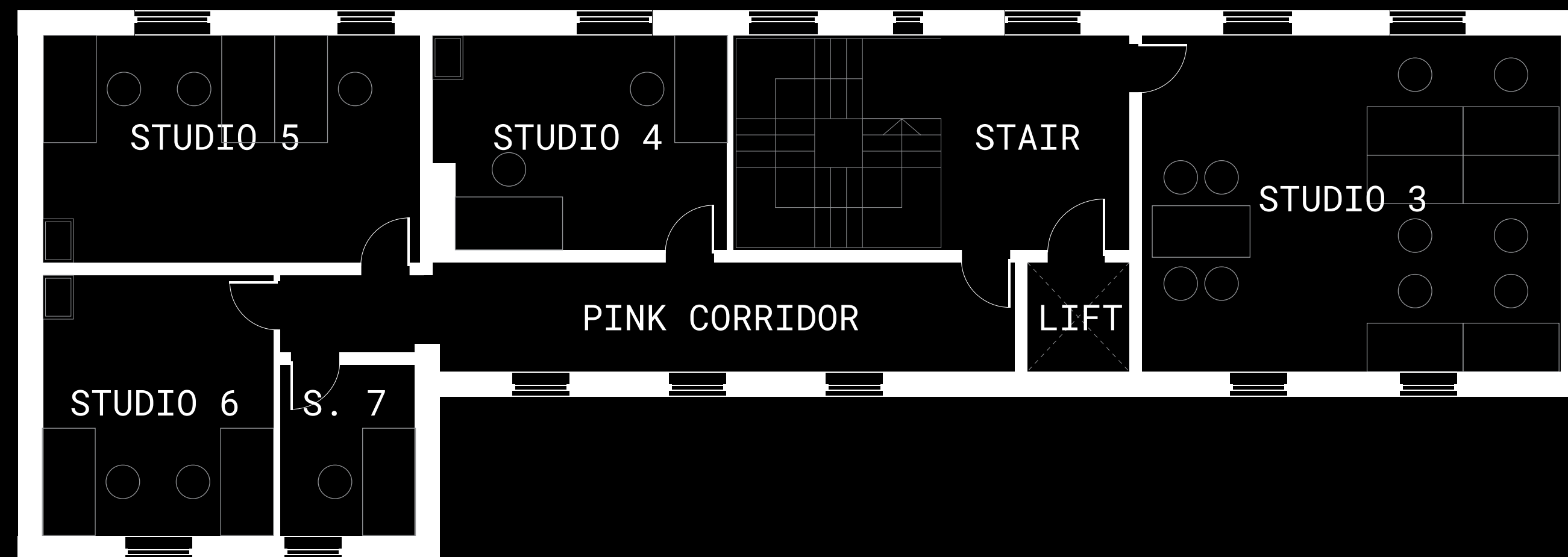




## GROUND FLOOR



## FIRST FLOOR



# Your options

Whether you've got a short term project or need a long term base, we're providing options tailored to your needs:

### RENT A FULL STUDIO

If you're looking for a new home for your business, or know other creatives you're keen to share with - our range of studios allow you to find the perfect fit.

### BECOME AN ASSOCIATE MEMBER

If you're a local freelancer looking for that home from home, our associate membership offers space in a shared working studio, as well as a mailbox, access to the kitchen and invitations to our Artist Networking events.

### RENT OUR FLEXIBLE SPACE - STUDIO 1

Studio 1 is available for daily or weekly hire, and is the perfect space for workshops, events, rehearsals and showcases.

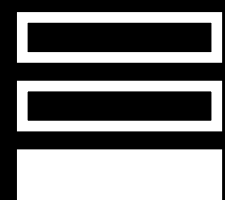


# Are you interested in joining our community?

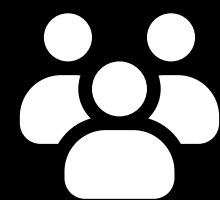
► If so, click here to register your interest ◀

As well as registering your interest in Richard Street Studios, this form also allows you to register interest in future studio and retail opportunities. This will help us tailor future initiatives from Rochdale Creates Space to the needs of our sector and allow us to keep you updated about future opportunities.

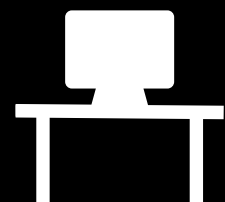
## TAILORED TO YOUR NEEDS



Range of tenancy options



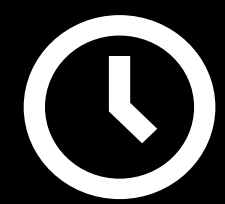
Join a creative community



Furniture & studio options



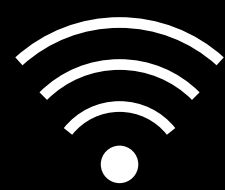
Training & networking



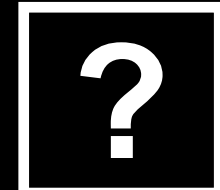
24/7 access for tenants



Shared kitchen social heart

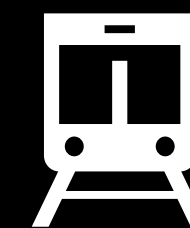


Full fibre WiFi throughout



Studio 1 flexible space

## EASY TO ACCESS



Next to bus, rail & Metrolink



Accessible parking space

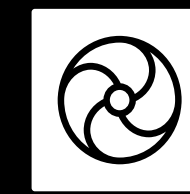


Cycle storage & shower

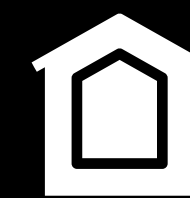


Wheelchair accessible

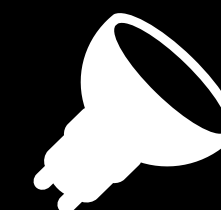
## SUSTAINABILITY MATTERS



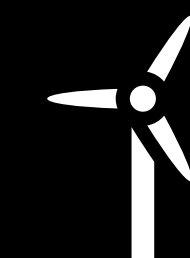
Air source heat pump heating



Building fully re-insulated



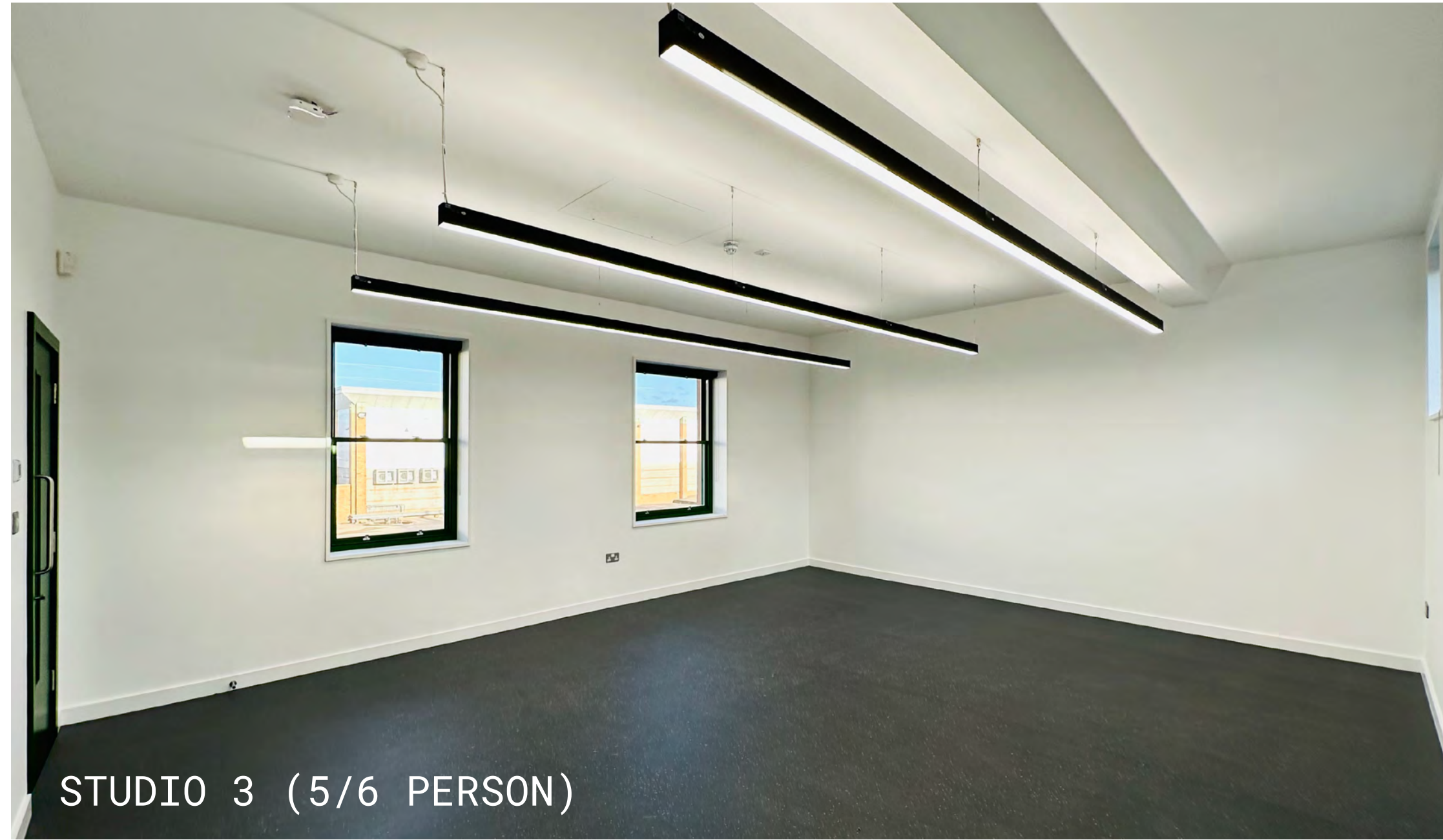
LED lighting throughout



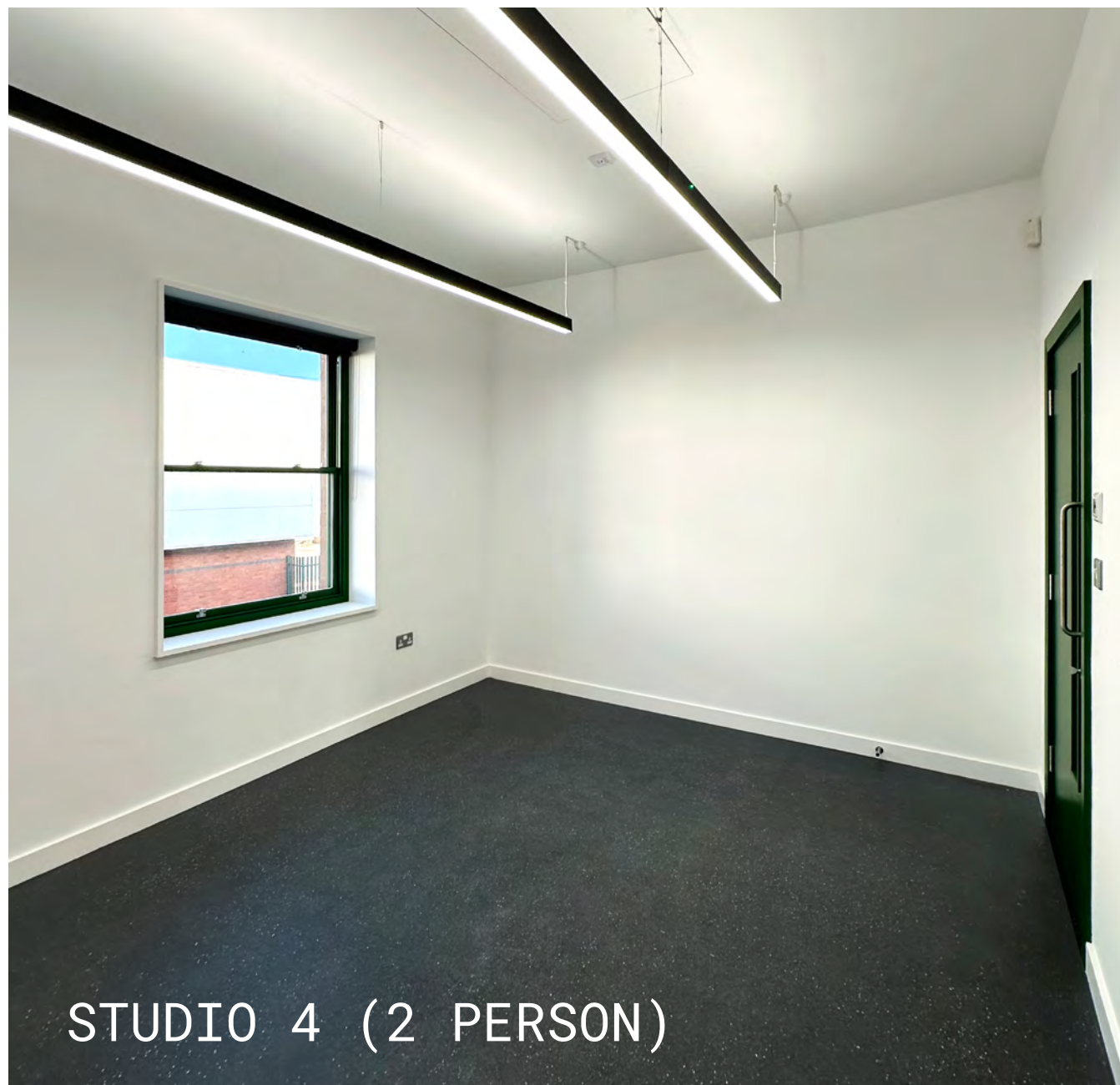
Powered by renewables



Space for  
you.



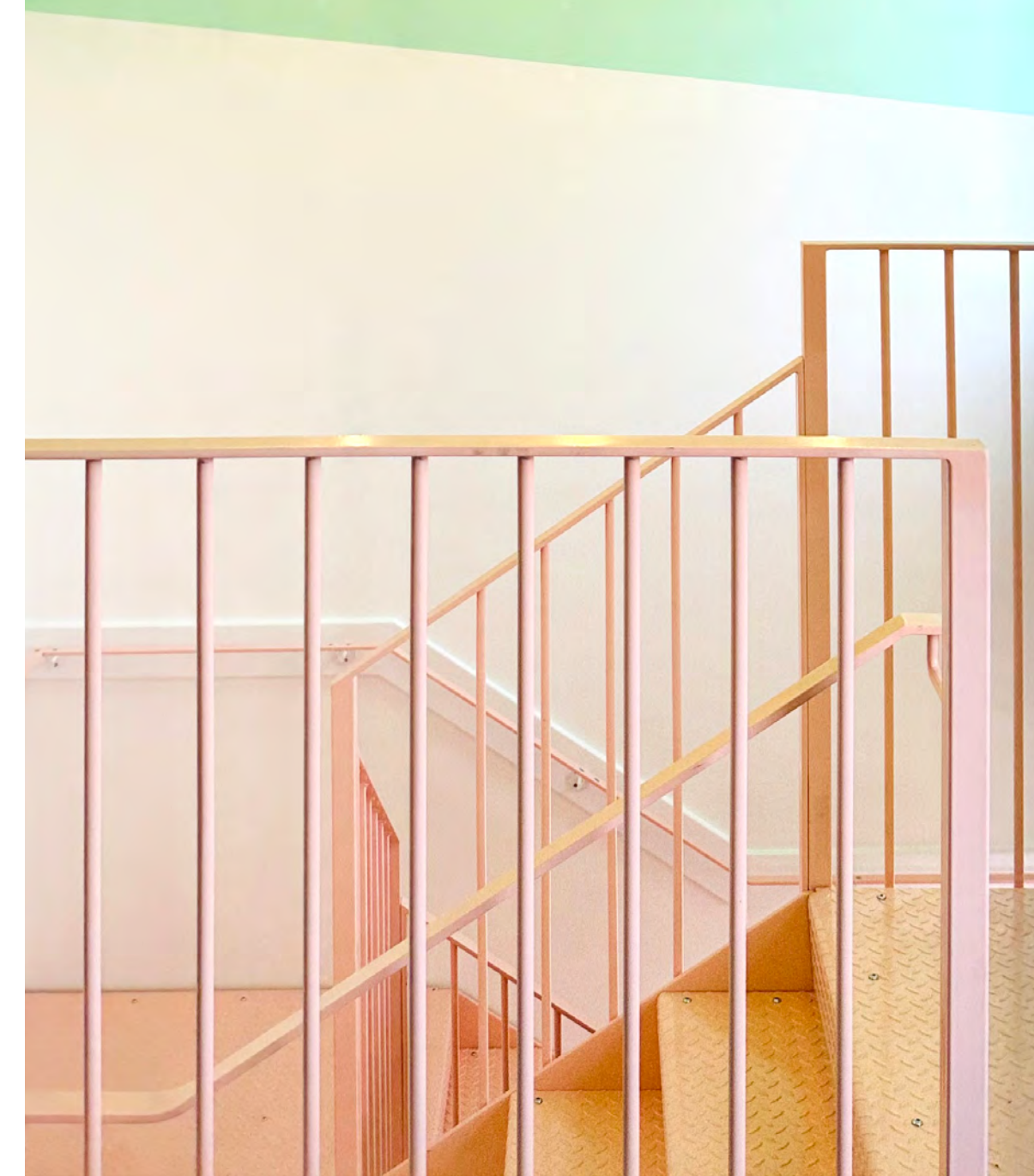
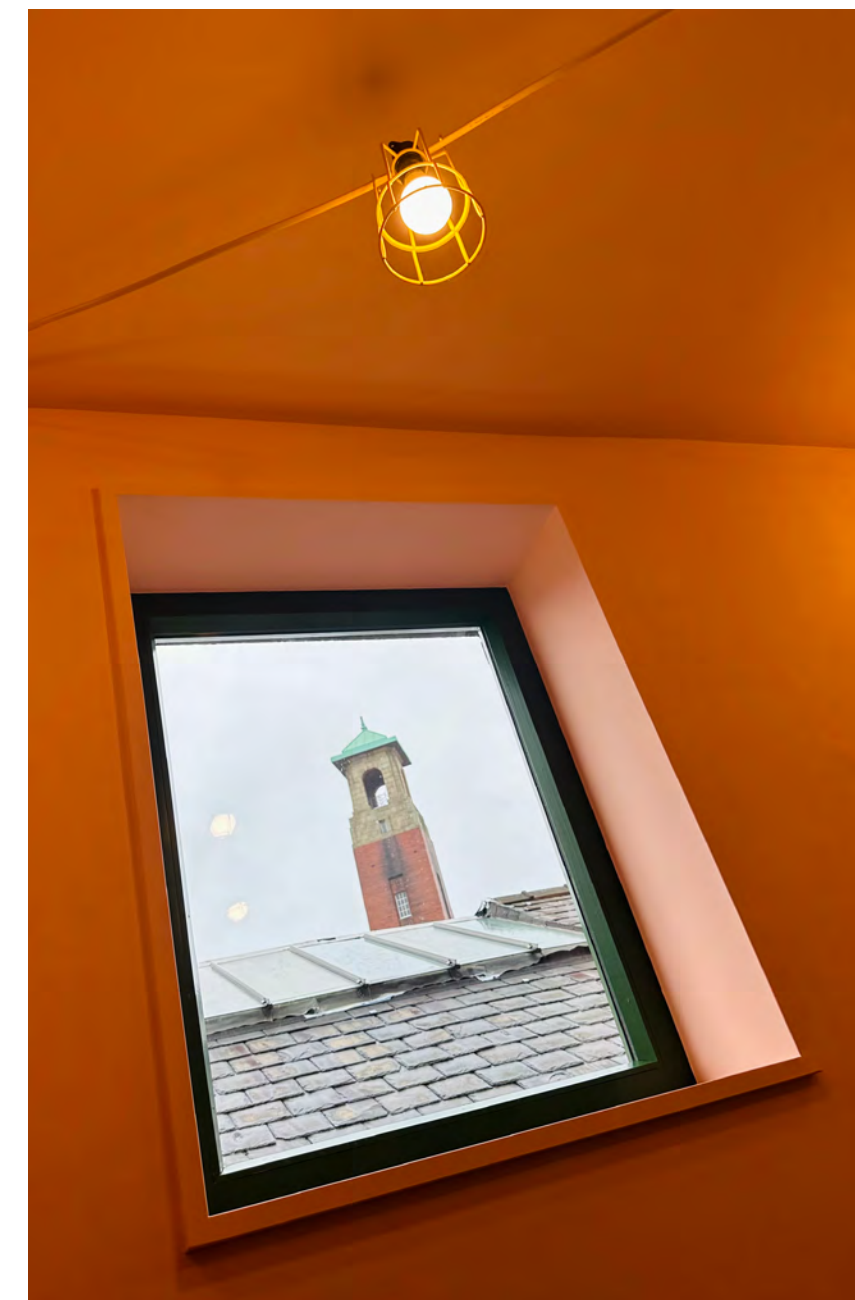
STUDIO 3 (5/6 PERSON)



STUDIO 4 (2 PERSON)



STUDIO 7 (1 PERSON)





# Rochdale Creates

Rochdale Creates Space is part of Rochdale borough's cross-sector initiative to support creativity and culture across our borough: 'Rochdale Creates'.

This includes the refurbishment of Touchstones and Heywood Civic, a range of creative business support programmes, commission opportunities, and a new 'Rochdale Creates' website to raise the profile of creatives, and communicate funding, training, and job opportunities.

RICHARD STREET STUDIOS IS  
SUPPORTED BY:



Rochdale Creates

Ambition  
Impact  
Enterprise

Artists

Community

Collaboration

Innovation

Growth

Ideas

Stories

Pioneers

Curiosity

Space

Rhythm

Narratives

Vision

Pride